



TELESCOPIC FORKLIFT | JMT 368

Tel: 01564 336622 Email: sales@JMacUK.com

Web: www.jmacuk.com

J Mac Excavators Ltd

J Mac



1 Two-speed transmission allows operators to select high and low speeds.



2 Lamps
Digital display instrument



3 Quick hitch for standard, can operate a sideshift function or hydraulic

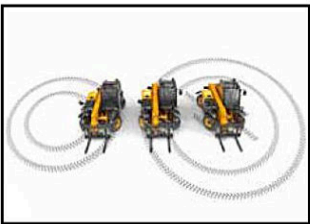
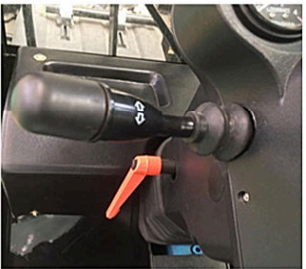
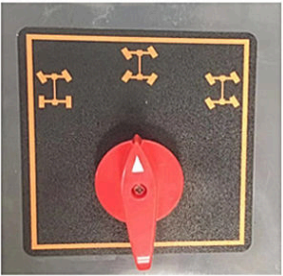


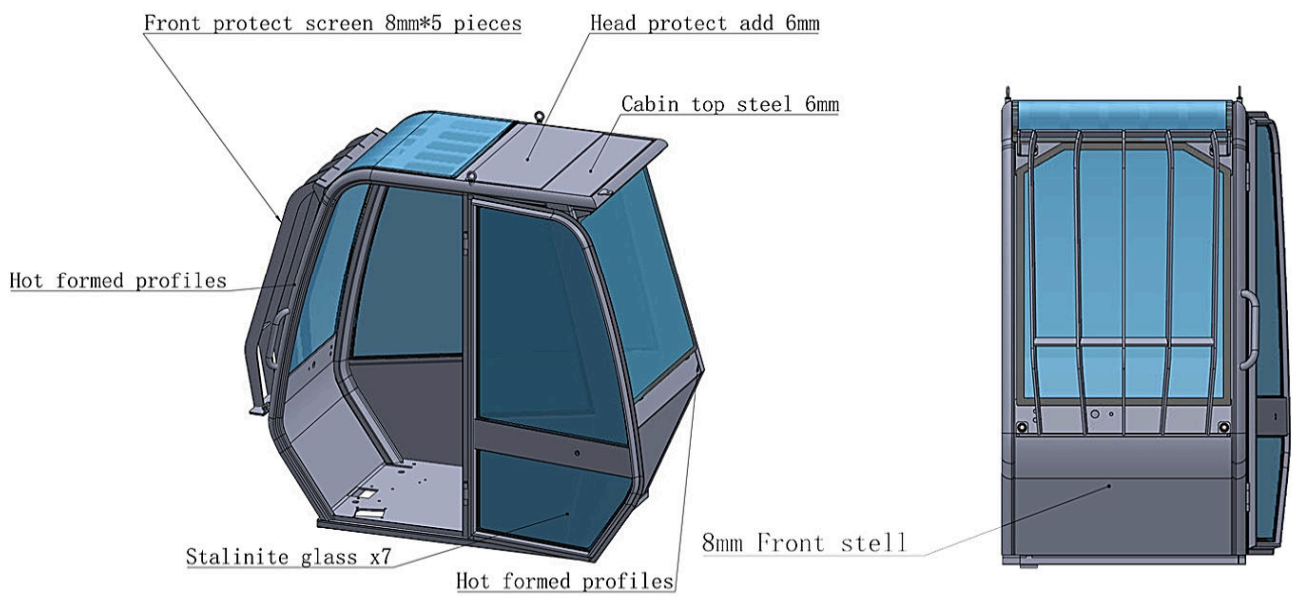
4 4-wheel steering modes. Two-wheel steer is perfect for roading; four-wheel steer provides great manoeuvrability in tight spaces; and crab steer is designed to edge your machine either close to or away from walls and buildings

5 Operators can manoeuvre quickly and easily, with directional shuttle changes possible via either.

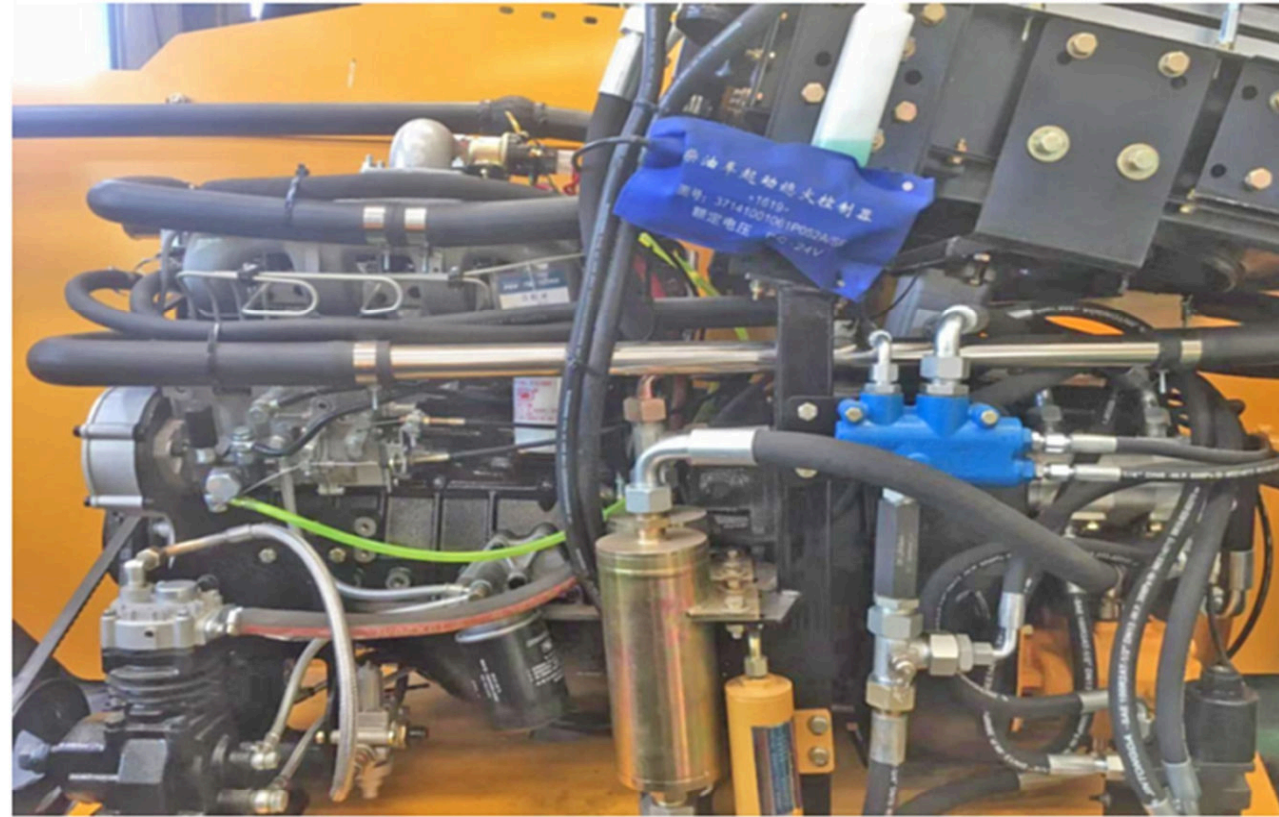
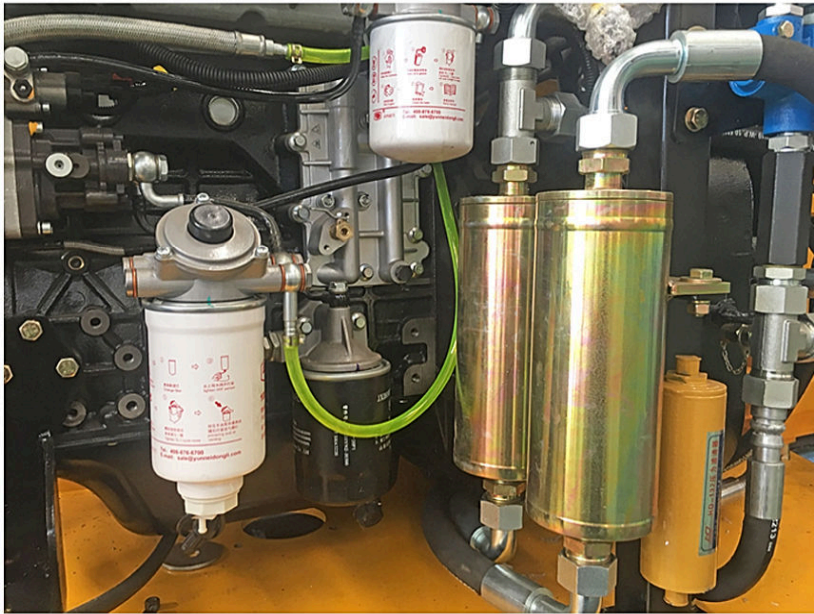
6 Joystick mounted shuttle switch(Forward, neutral, backward)

7 With a compact wheelbase and large steering lock angles, tight turning circles and superior manoeuvrability are assured





8 Cab with split door, fan. Comfort operator seat.
 High-strength thickened cabin structure for operator safety.
 Angle roof bars for optimal visibility at height.

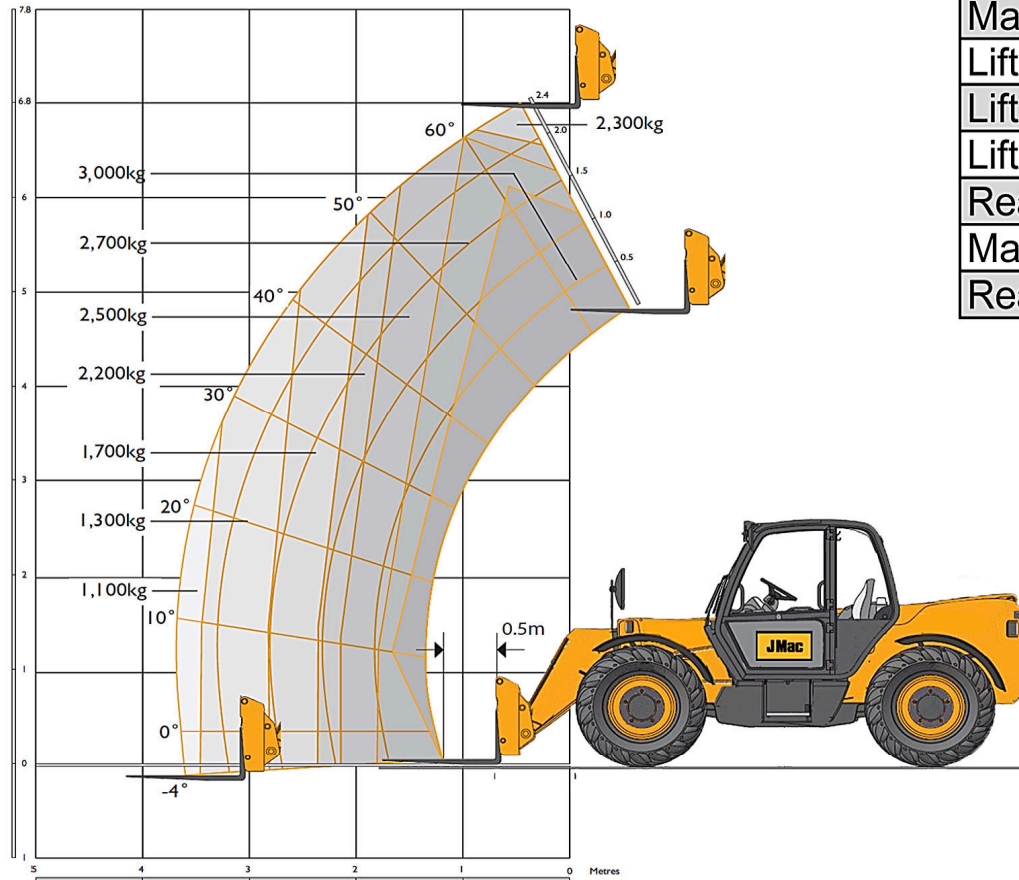


9 The service bay within is large and wide enough to afford great access to three sides of the engine. The filter element is easy to replace, and the large-capacity filter element is more durable.

10 The telehandler pressure detection.

JMT 368 Telehandler

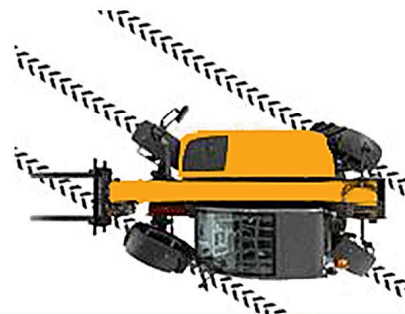
LIFT PERFORMANCE



LIFT PERFORMANCE

Maximum lift capacity	3000 kgs
Lift capacity to full height	2300 kgs
Lift capacity at full reach	1100 kgs
Lift height	6800 mm
Reach at maximum lift height	450 mm
Maximum forward reach	3600 mm
Reach with one ton load	3600 mm

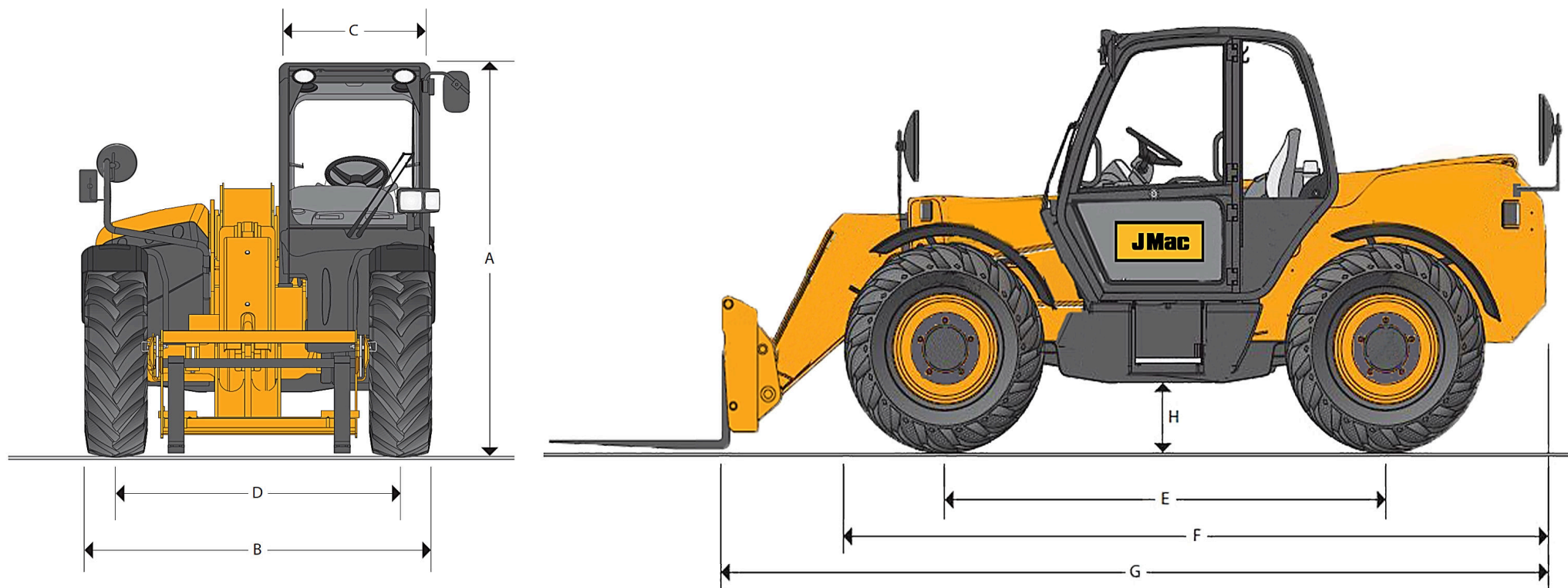
Three steering models



- Two-wheel steer is perfect for roading;
- Four-wheel steer provides great manoeuvrability in tight spaces;
- Crab steer is designed to edge your telehandler either close to or away from walls

JMT 368 Telehandler

MAX. LOAD CAPACITY: 3000Kgs / MAX. LIFT HEIGHT: 6800mm



Specification

A	Overall height	2300 mm
B	Overall width(over tyres)*	2150 mm
C	Inside width of cab	800 mm
D	Front track	1750 mm
E	Wheelbase	2850 mm
F	Overall length to front tyres	4200 mm
G	Overall length to front carriage	4650 mm
H	Ground clearance	350 mm

Outside turn radius (over tyres)		4250 mm
Carriage roll back angle	degrees	42.6
Carriage dump angle	degrees	37.5
Weight unladen		7250Kgs
Tyres		16/70-20
Fule tank		95L
Hydraulic oil tank		70L
Drive speed		23/Km

JMT 368 Telehandler

The engine

Latest technology and advanced design provides low fuel consumption, reduced noise, high torque and power output. total reliability and minimal maintenance, dry type air filter with primary and safety elements, territory dependent.

		Standard	Option	Option
Engine standard		Stage cn II	Stage cn II	Stage E III & EPAIII
Manufacturer		YUNNEI	Dongfeng CUMMINS	YANMAR (Japan)
Displacement	ltr	3.76	3.9	3.319
No.of cylinders		4	4	4
Bore size	mm	102	102	98
Stroke	mm	115	120	110
Aspiration		Turbo	Turbo	Turbo
Power rating				
Power @ 2400rpm	KW(HP)	76 (103)	74 (100)	/
Power @ 2500rpm	KW(HP)	/	/	61.3 (83)
Torque rating				
Torque @ 1500 (+100/-100)	Nm	300 - 325	298 - 330	
Torque @ 1850 (+100/-100)	Nm			234.6 - 259.8

The transmission

Powershift transmission incorporating Torque converter and two speed powershift gear box in one mounted unit.

A combined steering column mounted switch incorporating directional control and 2 forward and 2 reverse powershift gears.

Front and rear drive axles: Epicyclic hub reduction drive/steer axles with torque proportioning differentials permanent 4 wheel drive.

The brake

Service brake: Air pressure activated,Drum brakes.

Parking brake: Hand operated disc brake on output of gear box.

The boom and carriage

Boom is manufactured from high tensile steel.
Low maintenance, UHMWPE hard wearing pads.

Self-levelling carriage with hydraulic pin locking quickhitch. accepts pallet forks and a wide range of attachments. One boom end auxiliary hydraulic service fitted as standard.

The safety check valves

Fitted to carriage tilt cylinder, telescopic cylinder and boom lift cylinder.

The steering

Hydraulic cylinder power steering on both axles

Three steer model options: front wheel steer; All wheel steer; crab steer.

All operated from in the cab by a selection switch.

The hydraulic

Gear pump with suction strainer and filter

Operating system pressure	210 bar
Main Hydraulic gear pump	110 Ltrs/min
Hydraulic cycle times (unload)	Seconds
Boom raise	10
Boom lower	7
Boom extend	12
Boom Retract	8.6
Bucket dump	3.4
Bucket crowd	4.8

The electrics

24 Volte negative to earth. 12V 80 AH x 2 pieces battery. (Yanmar engine 12 Volte negative to earth 12V 80AH x 2 peces) Full road lighting. Reversing light, Direction indicators.Hazard warning light, Reverse alarm.

The liquied

Fule tank	Max.capacities	95 Litres
Hydraulic tank	Max.capacities	70 Litres
Transmission	Allow Max. Capacities	32 Litres
Axles (Front & Rear)	Allowed Max. Capacities	26 Litres
Colant	Max. Capacities	16 Litres

The cabin

Quiet safe and comfortable cab (Standard engine in idling) with ≤72 dBA. Tinted galss all round. Front windows and skylight FOPS.

Over weight warning system, Hourmeter, engine and oil temperature,Gear indicator, Fuel gauge. Hydraulic Joystick, quick hitch buttom,Adjustable deluxe seat. Adjustable steer column with stalk powershift changeand forward reverse shuttle.

The attachments

A big range of attachment fit telehandler quick hitch. bucket size from 0.8 meter width to 2.2 meter. The log fork, grass fork, mix bucket in same option.